



WinCan

Version history

Last updated January 3rd 2018

Version	Page
1.2018.4.1 (January 3 rd 2018)	3
1.2018.4.0 (December 3 rd 2018)	4
1.2018.3.8 (October 11 th 2018)	6
1.2018.3.7 (September 5 th 2018)	6
1.2018.3.5 (July 25 th 2018)	6
1.2018.3.4 (July 24 th 2018)	7
1.2018.3.3 (July 12 th 2018)	8
1.2018.3.2 (July 6 th 2018)	8
1.2018.3.1 (July 5 th 2018)	9

Version **1.2018.4.1** released January 3rd 2018

a. Bug fixes and improvements

- Problem with printing of project pictures fixed
- Map: Sewer network not displayed in certain projects fixed
- Map: Select by attribute layer issue with FileGDB layers fixed
- Refresh problem after importing a video file fixed
- Section length calculation issue fixed
- Duplicate finder tool improved
- DWA M-150 export: <Kl116> (manhole inspection video) added
- Section length calculation now also considers negative distances
- Problem that search & replace tool does not work if "Show inspected only" filter is active fixed
- EN13508 XML export for manholes implemented
- Problem with close button in MH wizard fixed
- SUFRIB Export improved
- BEFDSS Export improved

Version **1.2018.4.0** released December 3rd 2018

a. Bug fixes and improvements

- Export: PACP7 multiple fixes
- Export: Bulgaria BEFDSS Version 2 fixed
- Export: DWA m149-2 Exchange folder empty fixed
- Export: Hansen missing for Australia, New Zealand and USA fixed
- Export: Interlis export does not keep ID's from database fixed
- Export: Isybau 2006/2013 export and import documents fixed
- Export: ISYBAU2013 export fixed
- Export: TV3.1 Export fix
- Export: DWA M150 export Bauteil «<KZ013>» missing fixed
- Export: Isybau 2013 German Austria export coordinates fixed
- Import: Miraculix loses observations when importing multiple jobs with same name fixed
- Media Distribution: Performance issues fixed
- VX: Issue with switching to the default viewer profile
- VX: The columns are not automatically sized (auto-fit) anymore fixed
- VX: Apply new section name presets to existing sections
- Work Order: When POS_GAEBStatus change, another changes the color fixed
- Live Video: Full screen mode for Video Recording added
- Scan Explorer: Entering observations with wrong distance fixed
- Duplicates Finder: Unable to Close Panel
- Duplicates Finder: Consideration of filter tool implemented
- Map & 3D: UI Improvements
- Map: Sections and Laterals Shift functionality implemented
- Map: Extended measurement functionalities implemented
- Map: Select Rehab Variants feature implemented



- Map: Airport Grid 2007
- Map: Rehab variants displayed separate layers
- Map: Edit Shape Mode - Snap Tool is Inconsistent fixed
- 3D: 3D does not show the network anymore fixed
- 3D: Drawing not updated fixed
- 3D: Inlets/outlets not displayed anymore on 3D manhole sketch fixed
- 3D: Multiple improvements
- GIS SDK: Multiple improvements
- Light Viewer: Multiple improvements
- Draw: PDF file cannot be added as background fixed
- Draw: Legend of Symbols added
- Printing: Option to set default path for PDF added
- Printing: Section type colors do not work properly fixed
- Printing: Multiple fixes
- Plugin: DanDasAutoCreateLaterals plugin added
- Plugin: Auto Clip renaming not working anymore fixed
- Catalog: Japan Manhole Observation Catalog added
- Catalog: EN13508_DWA-M149-NRW fixed
- OSD: Charactersets for Visatec WKI device added
- OSD: Colors for the Rausch MobilePro added

Version **1.2018.3.8** released October 11th 2018

a. Bug fixes and improvements

- Issue with UNC project path resolved
- Isybau coordinate import issue resolved

Version **1.2018.3.7** released September 5th 2018

a. Bug fixes and improvements

- Hotfix: video issue in the viewer solved

Version **1.2018.3.5** released July 25th 2018

a. Bug fixes and improvements

- Hotfix: MX import (invert start/end manholes)
- Hotfix: work order module (export to excel).
- VX: Issue with JSWA template (Japanese version)



•

Version **1.2018.3.4** released July 24th 2018

a. Bug fixes and improvements

- **CleverScan: New version 1.2.11.0**
- VX: idle mode has been removed.
- VX: Issue when closing continuous defect in MH observations
- VX: Set flow direction (GIS shape import)
- VX: Issue duplicate finder tool not opening
- VX: Issue field not in the same order as in the template
- VX: Issue duplicate nodes (Rohrmax)
- VX: Issue changing section type from section into lateral
- VX: Issue VX panels and dialogue boxes not correctly displayed after software update.
- VX: Issue saving section (project standard: CUSTOM_IST_UK)
- VX: Issue avoid overwriting PDF report
- VX: Issue Rausch-Latras not correctly protected.
- VX: Error when creating a settings backup
- VX: Issue when using Template Editor and our the main WinCan database
- VX: Issue Isybau the profile field is not correctly populated
- VX: Issue Isybau-2006/2013 the manhole observation text is not created
- VX: Issue VSA M150 wrong text is colored on printout.
- VX: Issue Observation created on VX should receive distance & photo from ScanExplorer.
- VX: Issue Cannot select sufrib export for the NEN3399 standard.
- VX: Issue unable to print ScanExplorer overview report.
- VX: Issue VSA Interlis "Datentraeger" is missing in the export files
- VX: Issue status line 3 seems to be missing and the status line 1 is displayed twice (OSD)
- VX: Issue exception on opening huge project (SqlCe projects with a size of about 500 MB).
- VX: Issue ScanExplorer from DVD (Normal viewer) does not start



- LightViewer: stops video playback after going to observation
- Map: Issue when opening .gdb file
- Map: Issue when selecting a section

Version 1.2018.3.3 released July 12th 2018

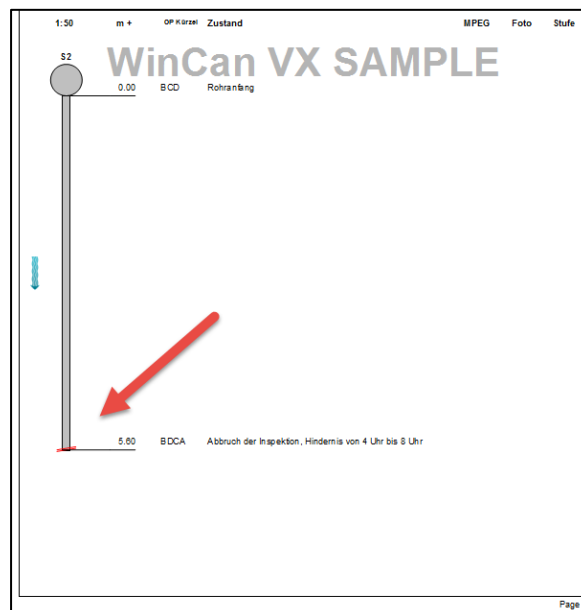
a. Improvements

- All the distances received from the CleverScan application are converted to the VX project unit.

Version 1.2018.3.2 released July 5th 2018

a. Bug fixes and improvements

- VX: For abandoned inspections where the inspection length is equal the section length the manhole symbol at the end is not printed anymore



- VX: Converted V8 projects do not score fixed
- Export (BEFDSS-Bulgaria): Observation codes not exported fixed
- Map: Coordinate system change not applied to all layers fixed
- Rausch Latras: Unhandled exception when creating a lateral fixed

Version **1.2018.3.1** released July 5th 2018

a. Bug fixes and improvements

- IBAK 3DGS: Issue with inspections with the flow fixed
- IBAK 3DGS: Auto start behavior of 3D changed
- IBAK 3DGS: Issue with laterals inspected against the flow fixed
- IBAK 3DGS: Issue that laterals were drawn at an incorrect angle fixed
- IBAK 3DGS: Issue that measurement is out of scope if end position is not specified fixed
- IBAK 3DGS: Issue that VX stops working after manually closing the 3D window fixed
- IBAK 3DGS: Laterals sometimes not refreshed unless restarting 3D fixed
- IBAK 3DGS: Bends not properly displayed in ArcGIS plugin fixed
- Map: Issue with big DXF including multiple layers fixed
- Map: Refresh issue after adding DXF plan fixed
- Map: Refresh issue after deleting a DXF plan fixed
- Map: Edit shape tool improved
- Map: Exception after using show line direction feature fixed
- Map: Issue when using DXF plan as snap to layer fixed
- Map: Issue that inspection and observation layer sometimes did not appear fixed
- Map: Issue that background tiles do not appear unless using the zoom function fixed
- Map: Rotation tool improved
- Map: Exception after using show data feature fixed
- Map: Changes in the print settings not saved fixed
- VX: Out of Memory exception in the extended filter fixed
- VX: Filter issue when switching between projects fixed
- VX: Out of Memory exception after loading several bigger projects fixed
- VX: Too many decimals displayed for numeric values fixed
- VX: Several adjustments in the Dutch NEN3399 template & catalog
- VX: Issue that GUID is displayed after entering meta data like operator or truck fixed



- VX: Restore issue with active file lock option fixed
- VX: ScanEx cannot be started unless the section is manually refreshed fixed
- VX: Not all inlets and outlets displayed in the 2D manhole sketch fixed
- VX: Message nothing to report in doc center fixed
- VX: SQLite databases (VC 500) cannot be filtered fixed
- VX: Issue with the Polish EN13508 catalogue fixed
- VX: Printing issue an error occurred during printing fixed
- VX: Setting Malaysia as default country does not work fixed
- VX: Issue with Vitec multiline recording fixed
- VX: The unit of the diameter is now considered for IBAK Panoramo scans
- VX: Audio playback does not work with certain media types fixed
- VX: Character printing issue with Slovakian, Polish and Hungarian projects fixed
- VX: Refresh issue after deleting multiple observations fixed
- VX: Filter value lists now sorted alphabetically A-Z
- VX: Cut section button removed
- Viewer: Message that meta DB cannot be found fixed
- Viewer: CleverScan data not found message fixed
- Export (PACP-6): Several bug fixes & improvements
- Export (LACP-6): Several bug fixes & improvements
- Export (MACP-6): Several bug fixes & improvements
- Export (PACP-7): Several bug fixes & improvements
- Export (LACP-7): Several bug fixes & improvements
- Export (MACP-7): Several bug fixes & improvements
- Export (TV3-Sweden): Several bug fixes
- Export (Isybau-2006 Germany): Several bug fixes and improvements
- Export (Isybau-2006 Austria): Several bug fixes and improvements
- Export (Isybau-2001 Germany): Issue with second numeric value for K---, Ka-, La-L and other observations fixed
- Export (VSAKEK-Switzerland): Several bug fixes and improvements
- Export (TV3-Finland): Several bug fixes



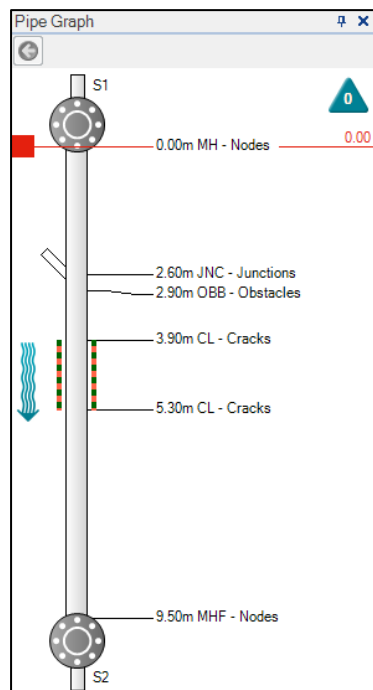
- Export (SUFRIB-Netherlands): Issue that 3rd characterization is exported twice fixed
- Export (SUFRIB-Netherlands): Video renaming feature does not work during export fixed
- Export (EN13508XML-Italy): Several new fields added
- Export (USA-LACP6): Process hangs when trying to export only filtered laterals fixed
- Import (MiraculIX): Issue with flow direction fixed
- Import (CityWorks): Issue with connection string fixed
- MediaDistribution: Distribution does not work if file lock is active fixed
- MediaDistribution: After several distributions of SQL server projects the target project does not appear in the project list fixed
- MediaDistribution: Issue when distributing LiteViewer to multiple DVD fixed
- ServiceHost: Exception SHI cannot execute method fixed
- ScanEx: Program always starts in English fixed
- ArcGIS Plugin: Issue with change detection tool fixed
- ArcGIS Plugin: Issue that observation layer is not displayed fixed
- ArcGIS Plugin: Issue that observations are not shown in ArcMap 10.5 fixed
- Converter: Missing inspections after conversion fixed
- PhotoAssistant: Translation path not existing message fixed
- DigiSewer: New versions of MindlessDIBFiller and WinCanDigiSewer.exe added
- Misc: Several adjustments in the ERZ Public template & catalogue
- Misc: Several adjustments in the ERZ Private template & catalogue
- Misc: Decimals extended to two for inlet/outlet drop in the Swiss-German VSA template
- Misc: Missing codes added in the Swiss-French VSA catalogue
- Misc: UNC path issue in the group export tool fixed
- Misc: New video- & photo naming preset added for the Swiss VSA standard
- Misc: Australian WSA scoring issues fixed
- Misc: Norwegian NORVAR RAPPORT scoring fixed
- Misc: Observation text for code BDA and BBEC fixed in the French En13508 catalogue



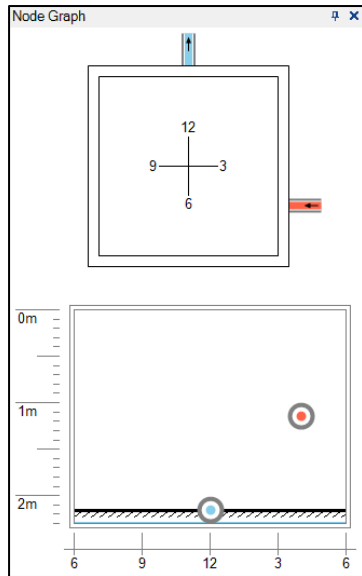
- Misc: Damage classification legend extended for Sweden
- Misc: New Zealand template & catalogue NZPIM revised
- Misc: New observations added in the Norwegian NORVAR RAPPORT manhole catalogue
- Misc: Shape not properly considered in the 3D manhole sketch in the Swedish template fixed

b. New features

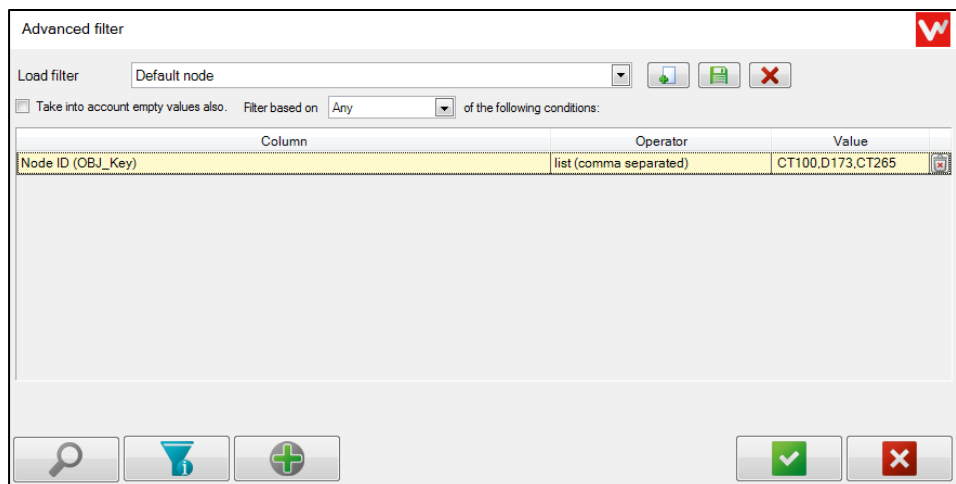
- VX: New file based templates added. They are located in C:\Users\Public\Documents\CDLAB\Common\Templates
- VX: Auto picture function for observation «BDA-Allgemeines Foto» in the Swiss VSA catalogue added
- VX: CSV Import (city of Bern) implemented
- VX: Observation distance added to 2D section sketch



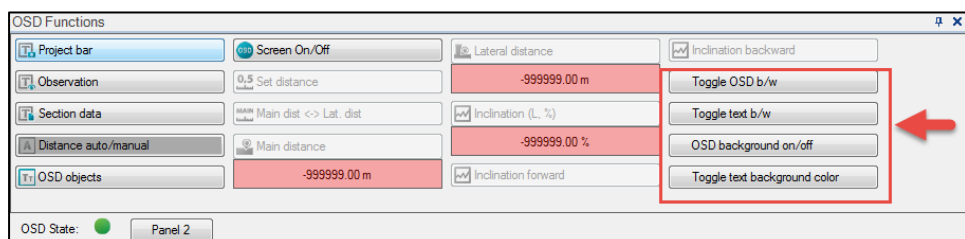
- VX: Rectangular chamber considered in 2D manhole sketch



- VX: New option to filter for multiple values in the extended filter

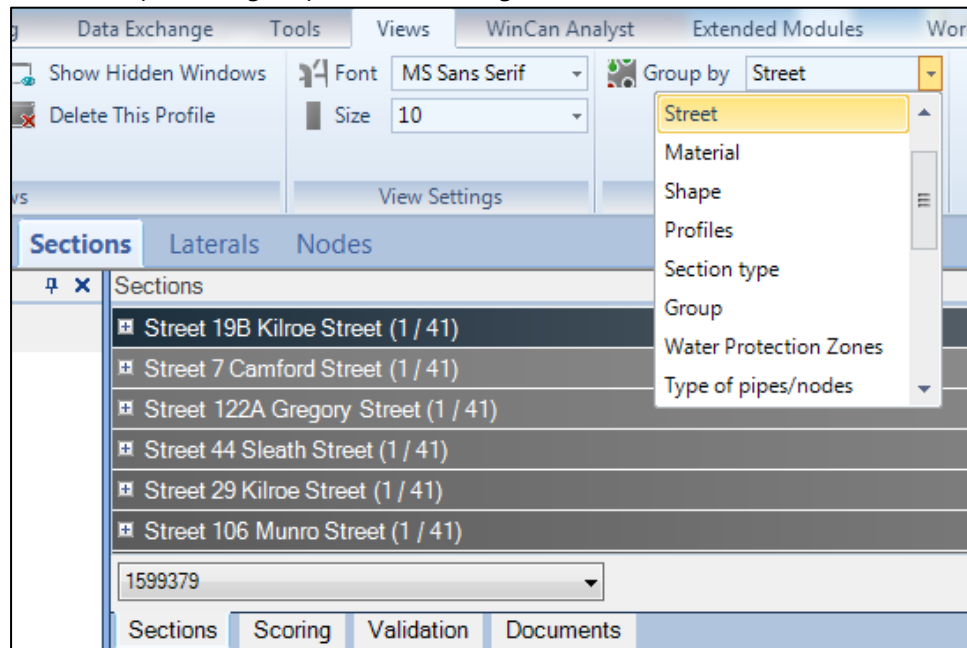


- VX: Signed Vitec driver implemented
- VX: New OSD buttons for fast switching text and background colors

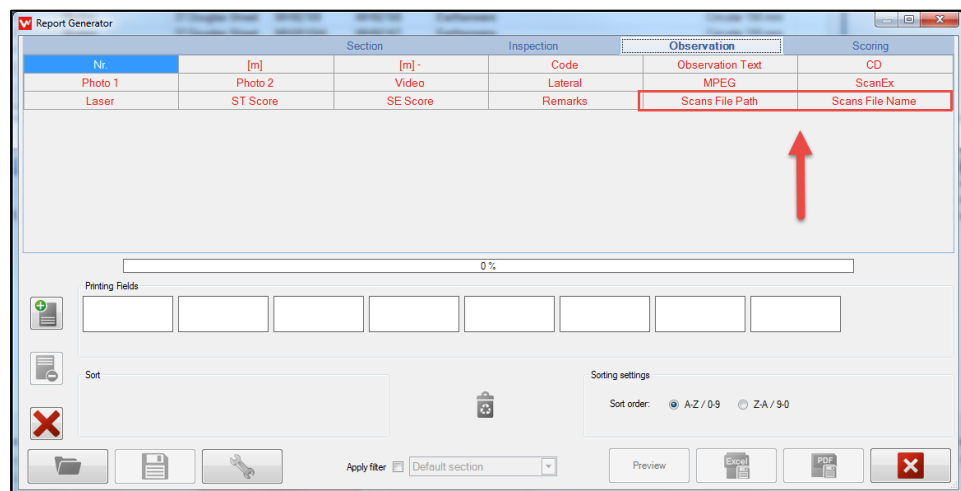




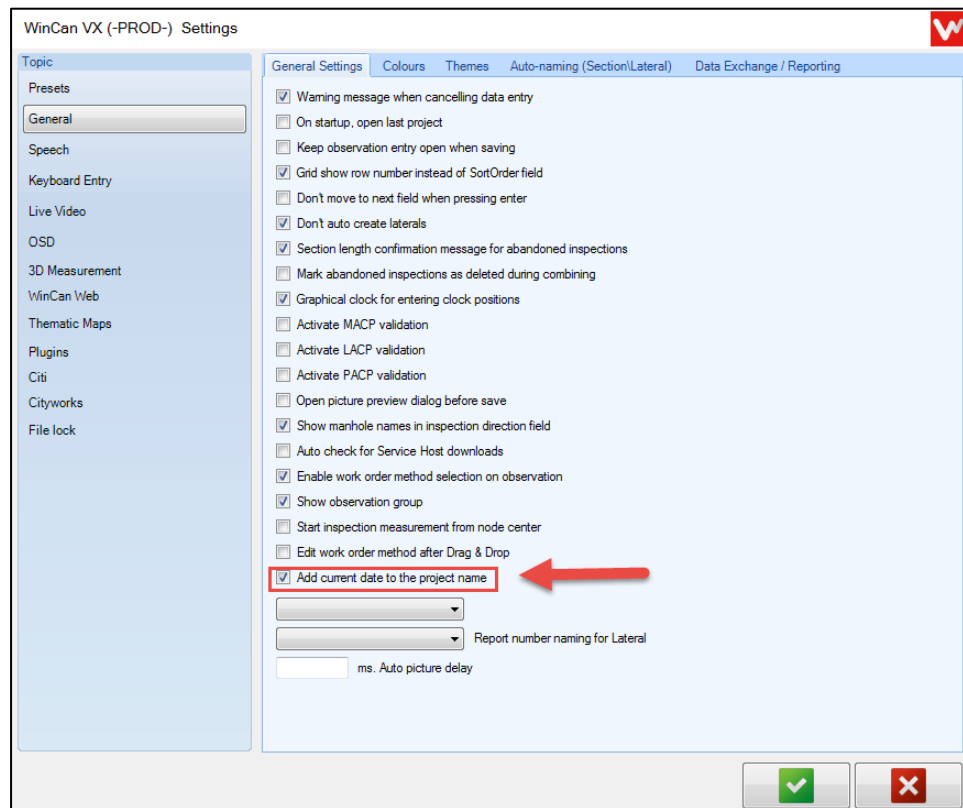
- VX: New option to group the overview grid



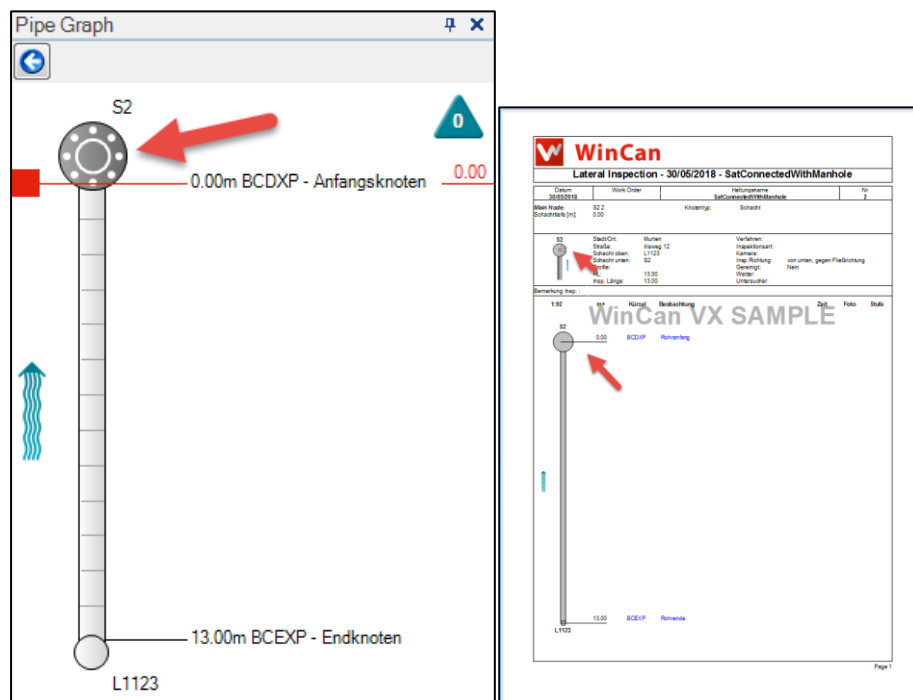
- VX: ScanEx file path and file name added to the report generator



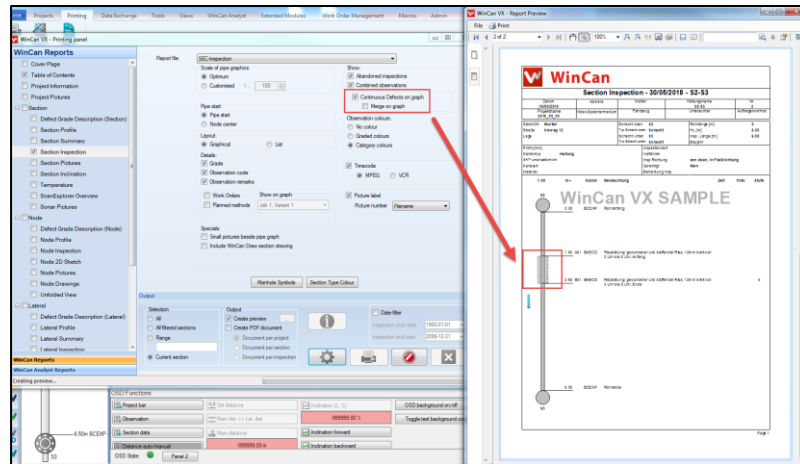
- VX: New option that automatically adds the current date and time to the project name



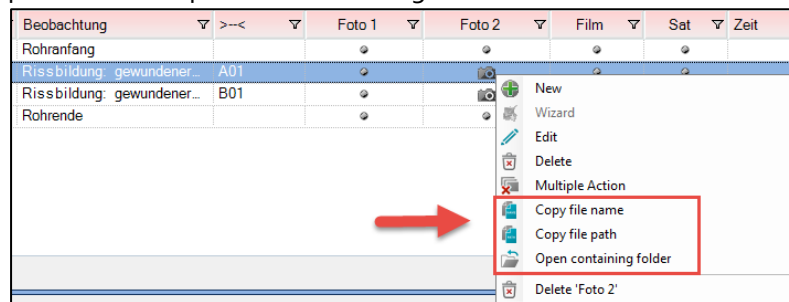
- VX: Laterals connected to manholes are now indicated on the 2D section sketch and lateral report



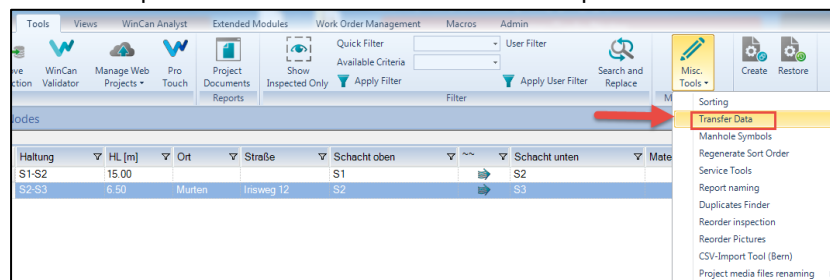
- VX: New option to print cont. defects on inspection reports:



- VX: New options in the observation context menu to copy file names and paths and to open the containing folder

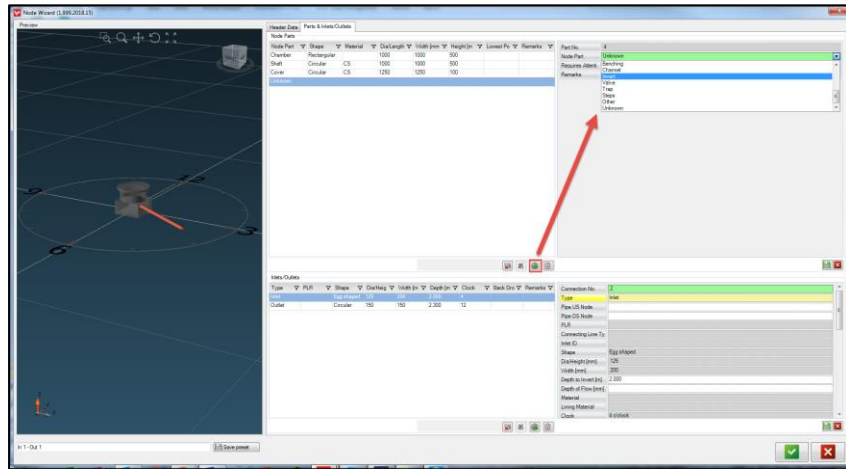


- VX: New option to transfer header data from previous section or manhole

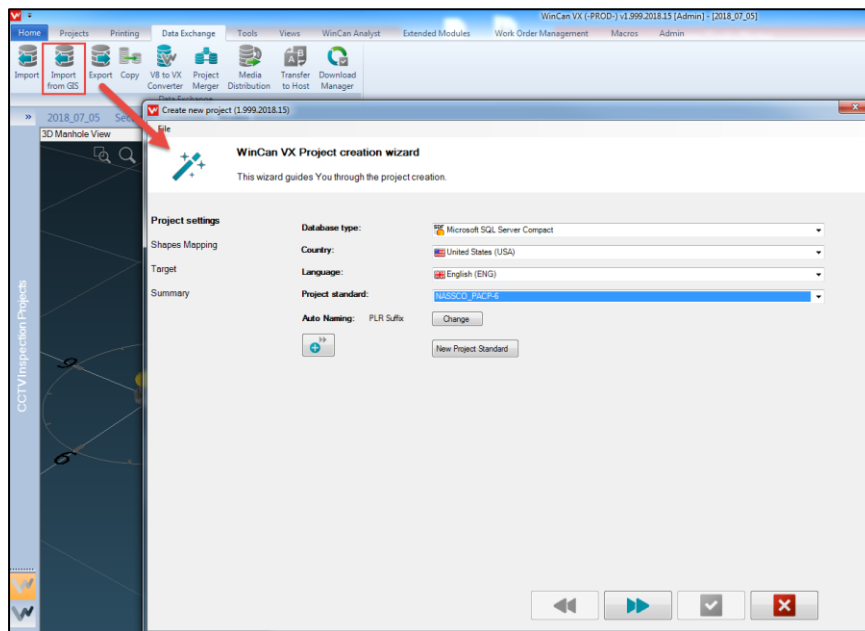




- VX: New option to add new manhole parts to existing manholes directly in the manhole wizard tool. The same applies for inlets and outlets

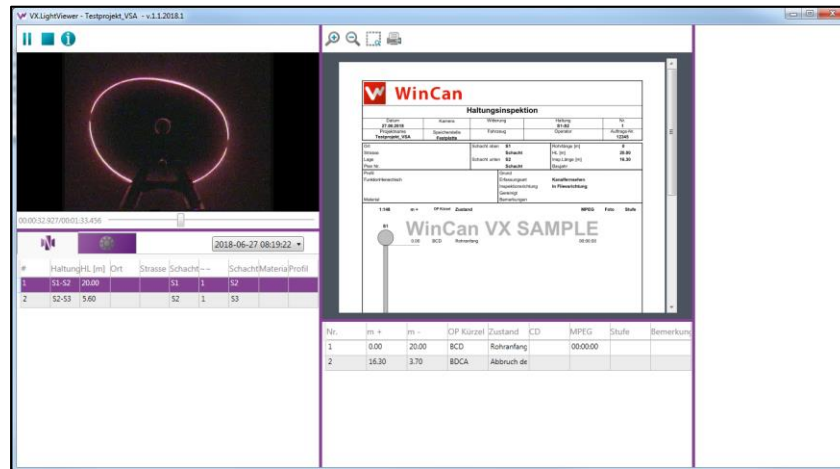


- VX: New GIS shape import option



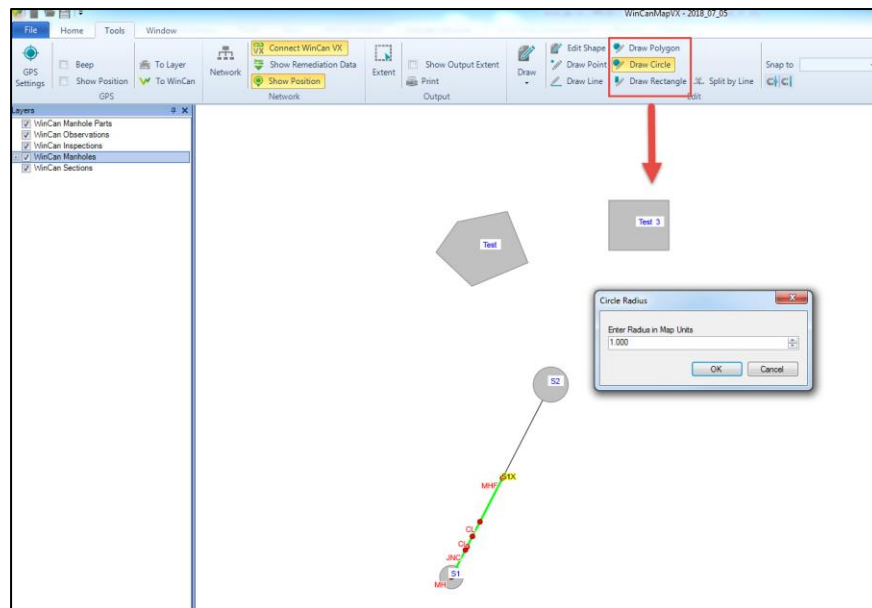


- LiteViewer: New MPEG-2 and MPEG-4 compatible video player added in the LiteViewer

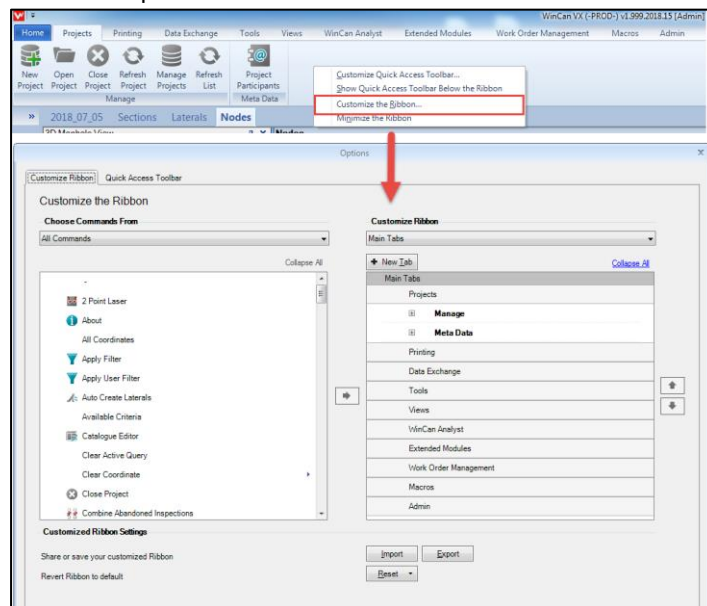


- VX: New countries added
- Argentina
- Brazil
- Chile
- Ecuador
- Peru
- Venezuela
- Iran
-
- VX: Isybau-2013 standard added for Austria

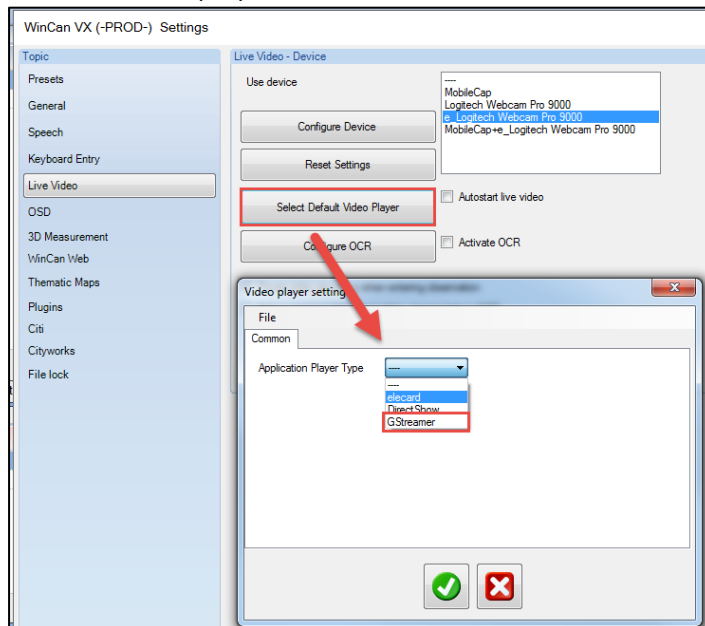
- Map: New option to draw circular, rectangular and polygon manholes



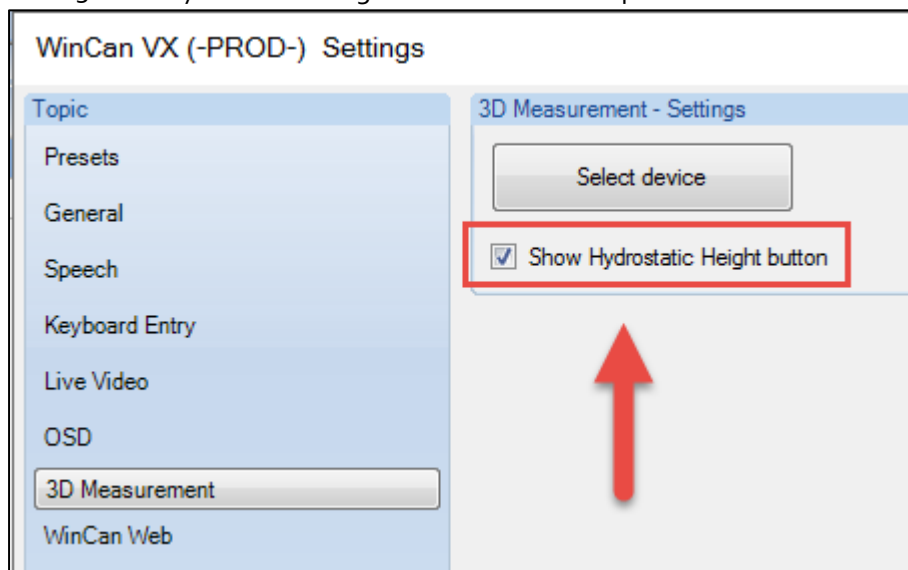
- VX: New option to customize the ribbon bar



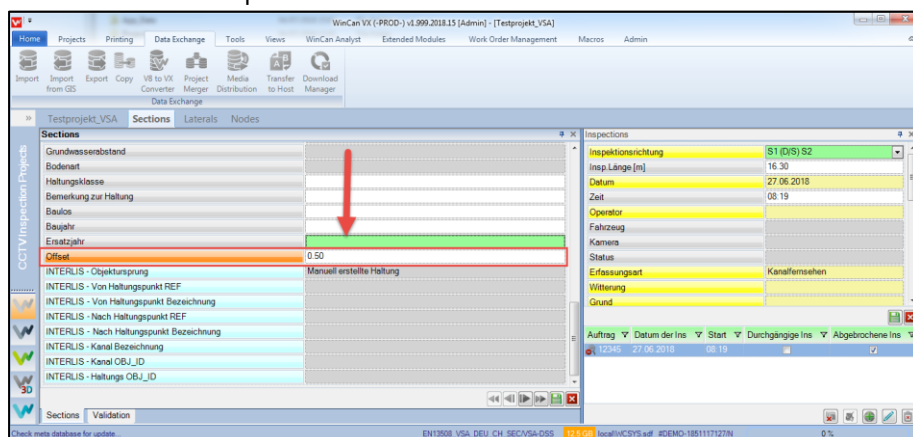
- VX: New video player GStreamer added



- IBAK 3DGS: Hydrostatic height measurement implemented

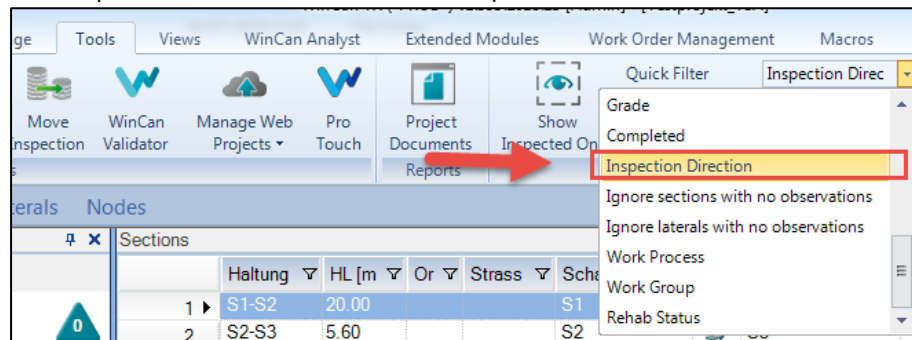


- IBAK 3DGS: New field to specify an offset for 3DGS measurement added in the Swiss VSA template

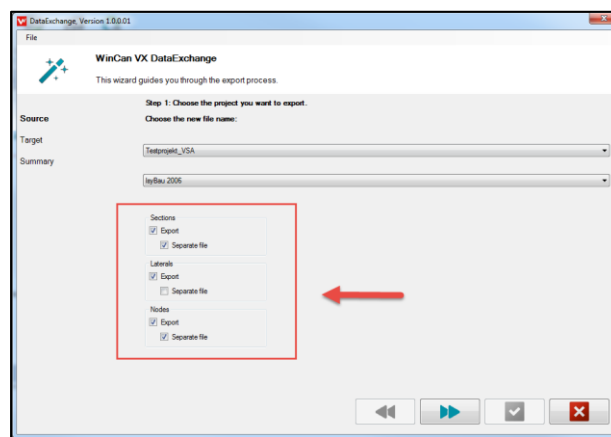




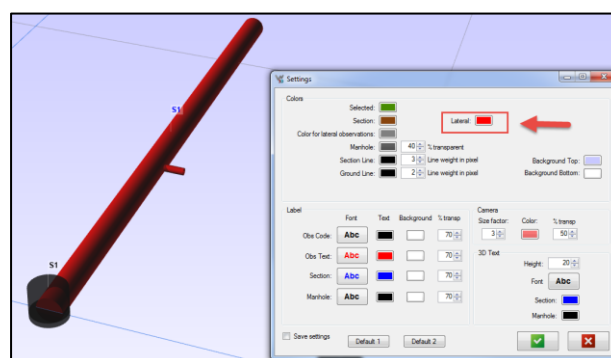
- IBAK 3DGS stop button implemented
- VX: Inspection direction added in the quick filter



- VX: New option to create separate files for sections, laterals and manholes in the German Isybau export



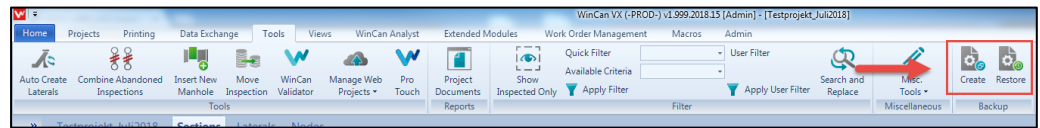
- 3D: Laterals are now connected to the pipe wall, not to the middle of the main section anymore.
- 3D: New option to specify a color for not inspected laterals (so only indicated with an observation in the main section):



- VX: New option to import multiple CITI projects at once
- ServiceHost: New option to upload media files in a separate, timed auto job
- VX: Export (GEMINI-Norway): Manhole XML export implemented
- VX: FTP over TLS connections now supported in the project upload tool



- VX: Hansen 7/8 import/export implemented
- VX: New option to backup and restore VX settings



- VX: After adding a CleverScan the video flag is now also set automatically
- ArcGIS Plugin: New option to select the rating field in the ArcGIS plugin
- VX: Deep Trekker DT340 OSD implemented
- VX: Iranian Borehole template & catalog implemented
- LiteViewer: Inclination report added to the LiteViewer
- VX: The filter is now considered in the scoring module
- VX: New option to specify default values for meta data fields like operator, truck and camera added
- VX: New option to move sections implemented

