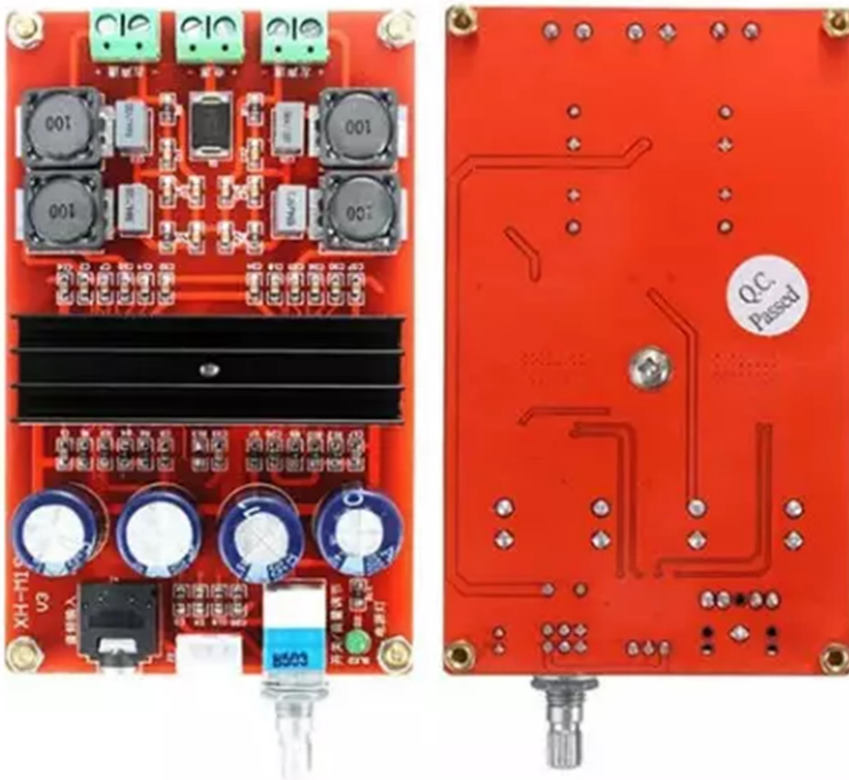


XH-M190 Tube Digital Audio Board TPA3116D2 12 To 24VDC 2X100W Power Audio Amplifier 2.0 Class D Stereo HIFI Amplifier

XH-M190 Tube Digital Audio Board TPA3116D2 Power Audio Amp 2.0 Class D Stereo HIFI amplifier DC12- 24V 2*100W. Build your own music system with dual 100W of stereo output. TPA3116D2 XH-M190 Dual Channel Digital Power Amplifier Board is a newly designed digital audio amplifier board with fine quality is practical to install and use also has good performance. It features a high-efficiency class D audio power amplifier with the latest and original TPA3116D2 core technology the BTL bridge circuit is more efficient than before. This product uses the double power supply transformer with a dynamic power supply range from 12V to 24V with high efficiency small quiescent current. Additionally, it is equipped with Perfect protection functions like overvoltage protection and output current limit. This Product is known as Amplifier, Audio Amplifier, Audio signal Amplifier, Digital Amplifier, Mono Channel Digital Amplifier, Mono Digital Amplifier, Dual Power Amplifier, Dual Amplifier, TPA3110 module, TPA3118, TPA3116D2, TPA3116D2 Amplifier, TPA3116D2 Dual Amplifier, TPA3116D2 Amplifier, Audio Amplifier Module.

Note: This Product is available in two different variants (XH-M190 and HW-303) with the same working.



Features:

- A strong TPA3116D2 chip is a digital power amplifier chip, with low idle loss characteristics, making it work well and quickly.
- Onboard, front-facing IC to improve the input sensitivity, and high-definition sound quality.
- It can be used for car vehicle computer speakers, family audio and video, and empty square.
- This product has the characteristics of loud sound, the capacitance is large, excellent sound quality.
- There is no solder joint on the back of the circuit board, the chip capacitors, and the solder board together, so there is no possibility of a short circuit.

Features/Specs:

- Chip Type: TPA3116D2
- Operating Voltage Range: 12 to 24VDC
- Output Power: 2X100 Watts
- Signal to Noise Ratio: 100db
- Length: 150 mm
- Width: 65 mm
- Height: 25 mm
- Approx Weight: 97 gm

Applications:

- Audio Module
- Amplifier