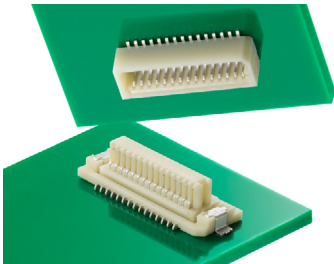


SlimStack Board-to-Board Connectors, 0.80mm Pitch, Floating Series

molex

SlimStack B-to-B Connectors, 0.80mm Pitch, Floating Series feature a floating structure for space savings and easy assembly, and various mating height options in vertical and right-angle orientation for design flexibility



Features and Advantages

Rigid-type connectors available in 10 to 40 circuits

Meets a wide range of application requirements

Different stack height options; vertical and right-angle orientation

Offers design flexibility for specific space requirements











Floating receptacle structure

- Reduces printed wiring board (PWB) gap
- Facilitates assembly in the event of misalignment or blind joining

Mating guide key
Ensures correct mating

Vertical plug

Right-angle plug

Lineup Combination					
Floating Type	Receptacle	Plug			
	52588	53307	53364	53353	53309
					
Mated Height (mm)	5.50 to 8.00	5.50	7.00	8.00	6.65
Rigid Type	Receptacle	Plug			
	52465	53307	53364	53353	53309
					
Mated Height (mm)	4.50 to 7.00	4.50	6.00	7.00	5.65

Applications

Automotive

Car infotainment

Consumer

Smart speakers

Home appliances

Datacom

Servers

Office equipment

Industrial

Automation machines



Car Infotainment



Smart Speaker



Office Equipment

SlimStack Board-to-Board Connectors, 0.80mm Pitch, Floating Series

molex

Specifications

REFERENCE INFORMATION

Packaging: Embossed Tape and Reel
Designed In: Millimeters
RoHS: Yes
Halogen Free: No

ELECTRICAL

Voltage (max.): 50V
Current (max.): 0.5A per circuit
Contact Resistance (max.):
40 milliohms (mate with 52588 series)
20 milliohms (mate with 52465 series)
Dielectric Withstanding Voltage (min.): 500V AC
Insulation Resistance (min.): 100 Megohms

PHYSICAL

Housing: PA, UL 94V-0
Contact: Copper Alloy
Plating:
Contact Area – Refer to ordering information
Solder Tail Area – Refer to ordering information
Underplating – Nickel
Operating Temperature: -40 to +105°C

MECHANICAL

Mating Force (max.):
Refer to product specifications
Unmating Force (min.):
Refer to product specifications
Durability (max.): 30 cycles

Dimensions

Refer to drawing for detail dimension

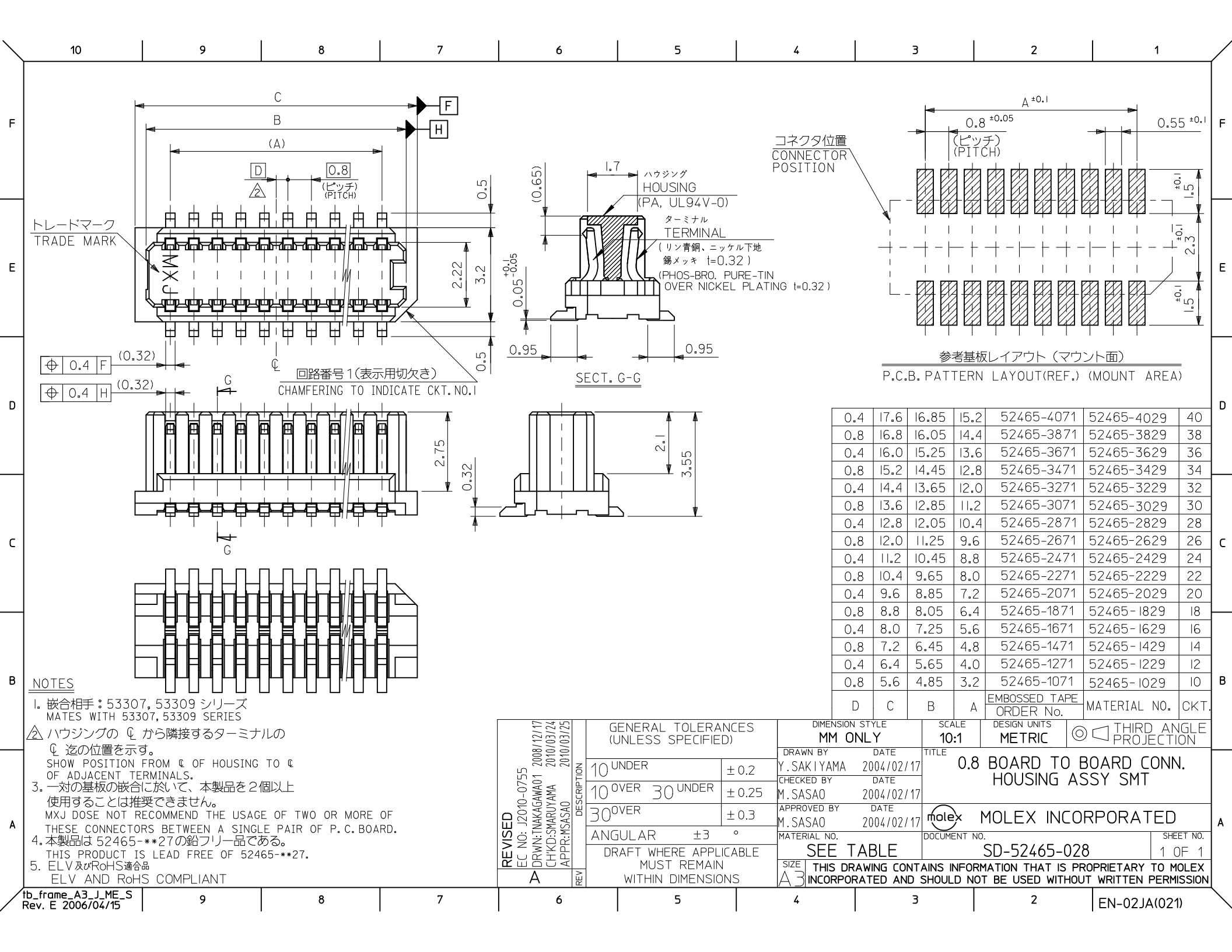
Ordering Information

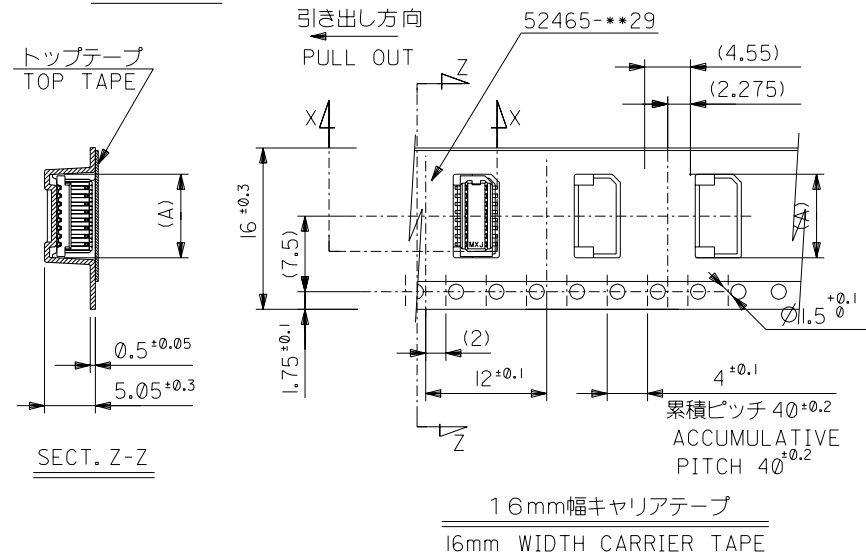
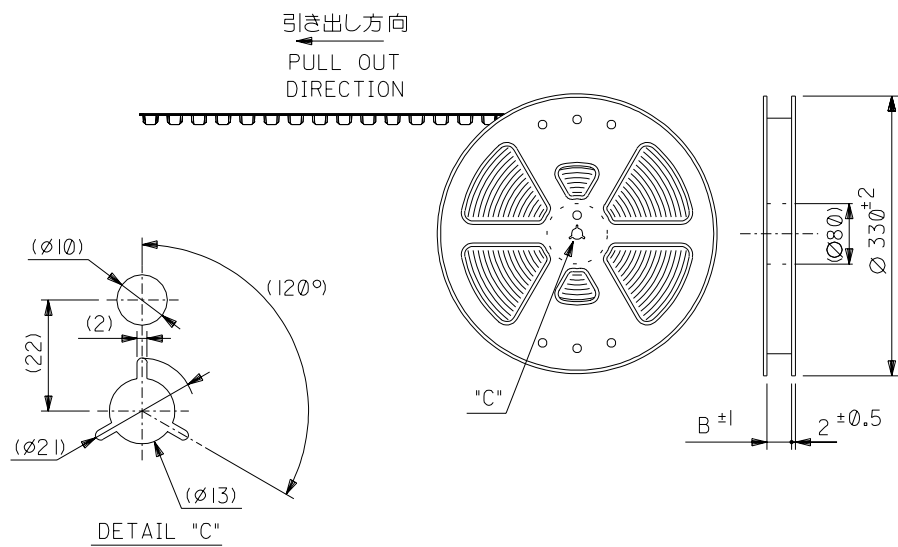
Structure	Order No.		Mated Height (mm)	Mated Width (mm)	Orientation	Boss		Plating	Circuits
	Receptacle	Plug				Receptacle	Plug		
Floating Type	52588-**75	53307-**71	5.50	7.20	Vertical	Without Boss	Without Boss	Tin	18, 20, 30
		53364-**70	7.00				With Boss		
		53364-**71					Without Boss		
		53353-**71	8.00	Without Boss					
		53309-**70	6.65	Without Boss					
		53309-**71		With Boss					
Rigid Type	52465-**70	53364-**70	6.00	7.20	Vertical	With Boss	With Boss	Tin	10, 12, 20, 28, 30, 36, 40
		53309-**71	5.65	4.70	Right Angle				20, 24, 26, 28, 30, 40
	52465-**71	53307-**71	4.50	7.20	Vertical	Without Boss	Without Boss		10, 12, 14, 16, 18, 20, 22, 24, 26, 28, 30, 36, 40
		53364-**71	6.00						18, 20, 30, 36
		53353-**71	7.00						10, 16, 18, 20, 28, 30, 40
		53309-**70	5.65	4.70	Right Angle				10, 12, 14, 16, 18, 20, 22, 24, 26, 28, 30, 32, 36, 40
		52465-**62	53309-**62					5.65	Gold

** : circuit size

www.molex.com/link/slimstack.html

Molex is a registered trademark of Molex, LLC in the United States of America and may be registered in other countries; all other trademarks listed herein belong to their respective owners.





NOTES

1. 梱包数量: 1000 個/リール NUMBER OF CONNECTORS: 1000 PCS/REEL

2. リードテープ長さ LEAD TAPE LENGTH

トップテープ
リーダー部
TOP TAPE
LEADER PART

175 ±25

トップテープ
未接着部
TOP TAPE
NON-BONDED PART

25 ±5

引き出し方向
PULL OUT
DIRECTION引き出し方向
PULL OUT
DIRECTIONリーダー部
(空部)
LEADER
PART (EMPTY)部品挿入部
COMPONENT
SUPPLIER末端部 (空部)
TAIL PART
(EMPTY)

120 ±20

150 ±40

3. トップテープの剥離強度: 0.1 ~ 1.3N (10 ~ 130gf) (剥離方向は下図参照)

尚、本規格値は、出荷時に適用。(但し、輸送時に剥離が発生しない事。)

PEELING OFF FORCE OF TOP TAPE: 0.1 ~ 1.3N (10 ~ 130gf)

(PEELING DIRECTION AS SHOWN IN FOLLOWING FIG.)

THIS REQUIREMENT SHOULD BE APPLIED AT SHIPMENT

PEEL OFF SHOULD NOT BE ALLOWED, DURING TRANSPORTATION

引き出し方向
PULL OUT
DIRECTION引き出し方向
PULL OUT
DIRECTION

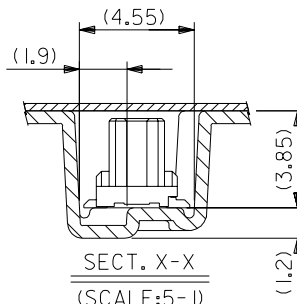
MATERIAL

4. 材料

キャリアテープ: ポリプロピレン (PP)
トップテープ: PET, PE, PEF
リール: ポリスチレン (PS)
<リサイクル材を含む>CARRIER TAPE: POLYPROPYLENE
TOP TAPE: PET, PE, PEF
REEL: POLYSTYREN (PS)
<RECYCLE MATERIAL CONTAINED>

5. 本製品は 52465-**91 の鉛フリー品である。

THIS PRODUCT IS LEAD FREE OF 52465-**91.



16	17.5	9.1	52465-1871	18
		8.3	52465-1671	16
		7.5	52465-1471	14
		6.7	52465-1271	12
		5.9	52465-1071	10
キャリアテープ幅 CARRIER TAPE WIDTH	B	(A)	MATERIAL NO.	CIRCUITS

MODEL NO.	52465-**71	DIMENSIONS:	SHT	REV
		<input type="checkbox"/> mm <input type="checkbox"/> INCH <input checked="" type="checkbox"/> mm ONLY		
		THIRD ANGLE PROJECTION		REVISE ON CAD ONLY

GENERAL TOLERANCES: (UNLESS SPECIFIED) 一般公差	SCALE	DESIGN UNITS <input checked="" type="checkbox"/> mm <input type="checkbox"/> INCH	DRAWN BY & DATE Y.SAKIYAMA '04/02/17	TITLE: 0.8 B-To-B Hsg Assy SMT Embstp Pkg -LEAD FREE-
10 UNDER 未満	±0.2		CHECKED BY & DATE M.SASAO '04/02/17	
10 OVER 30 UNDER 未満	±0.25		APPROVED BY & DATE M.SASAO '04/02/17	
30 OVER 以上	±0.3		CAD FILENAME SD-52465-029.S01	
ANGLE 角度	±3°		MATERIAL NO. SEE CHART	DRAWING NO. SD-52465-029
			SHEET NO. 1 OF 2	

THIS DRAWING CONTAINS INFORMATION THAT IS PROPRIETARY TO MOLEX INCORPORATED AND SHOULD NOT BE USED WITHOUT WRITTEN PERMISSION.

SIZE
B

