

PQ20VZ51/PQ20VZ11

Variable Output, Surface Mount Type Low Power-Loss Voltage Regulators

■ Features

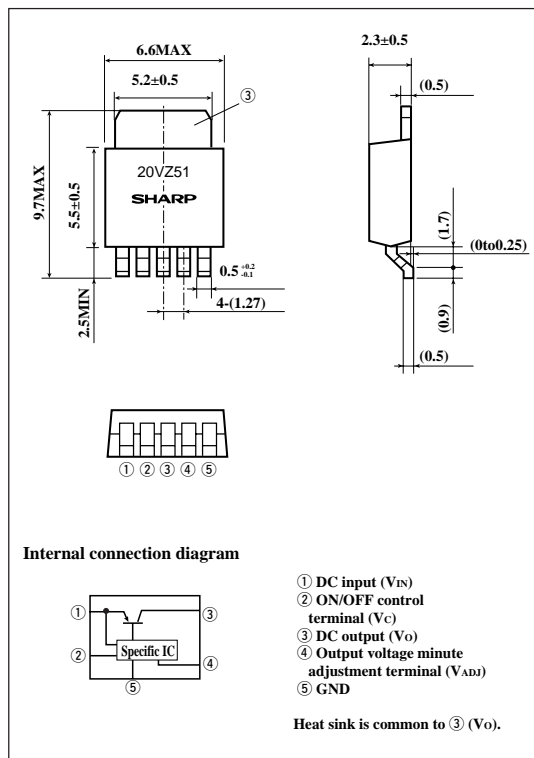
- Low power-loss (Dropout voltage : 0.5V)
- Compact surface mount package
- Both the 0.5A output PQ20VZ51 and the 1A output PQ20VZ11 have high-precision outputs (Reference voltage precision : $\pm 2.0\%$)
- Variable output type (Output voltage variable range : 1.5V to 20V)
- Built-in ON-OFF control function
- Low dissipation current at OFF-state (I_{qs} : MAX.5 μ A)
- Tape packaged type is available.
($\phi 330$ mm reel : 3 000pcs.,PQ20VZ5U/PQ20VZ1U)

■ Applications

- Car audio equipment
- VCR

■ Outline Dimensions

(Unit : mm)



■ Absolute Maximum Ratings

(T_a=25°C)

| Parameter | Symbol | Rating | Unit |
|---|------------------|---------------|------|
| *1 Input voltage | V _{IN} | 24 | V |
| *1 Output control voltage | V _C | 24 | V |
| *1 Output adjustment terminal Voltage | V _{ADJ} | 7 | V |
| Output current | I _O | 0.5 | A |
| | | 1 | |
| Power dissipation (With infinite heat sink) | P _D | 8 | W |
| *2 Junction temperature | T _j | 150 | °C |
| Operating temperature | T _{opr} | -20 to +80 | °C |
| Storage temperature | T _{stg} | -40 to +150 | °C |
| *3 Soldering temperature | T _{sol} | 260 (For 10s) | °C |

*1 All are open except GND and applicable terminals.

*2 Overheat protection may operate at 125°C<T_j<150°C

*3 For 10s

· Please refer to the chapter "Handling Precautions".

SHARP

"In the absence of confirmation by device specification sheets, SHARP takes no responsibility for any defects that may occur in equipment using any SHARP devices shown in catalogs, data books, etc. Contact SHARP in order to obtain the latest version of the device specification sheets before using any SHARP's device."

■ Electrical Characteristics

Unless otherwise specified, $V_{IN}=12V$, $V_O=10V$,^{*4}, $R_1=1k\Omega$, $V_C=2.7V$ ($T_a=25^{\circ}C$)

| Parameter | Symbol | Conditions | MIN. | TYP. | MAX. | Unit |
|--|---------------|---------------------------------------|-------|-----------|-------|---------|
| Input voltage | V_i | $V_O=1.5V$ | 4.5 | - | - | V |
| Output voltage | V_O | $R_2=225\Omega$ to $14.6k\Omega$ | 1.5 | - | 20 | V |
| Load regulation | R_{egL} | ^{*5} | - | 0.2 | 2.0 | % |
| Line regulation | R_{egI} | $V_{IN}=11$ to $21V$, $I_O=5mA$ | - | 0.2 | 2.5 | % |
| Ripple rejection | RR | Refer to Fig. 2 | 45 | 60 | - | dB |
| Reference voltage | V_{ref} | ^{*4} | 1.225 | 1.25 | 1.275 | V |
| Temperature coefficient of reference voltage | $T_C V_{ref}$ | $T_j=0$ to $125^{\circ}C$, $I_O=5mA$ | - | ± 1.0 | - | % |
| Dropout voltage | V_{i-O} | ^{*4} , ^{*6} | - | 0.2 | 0.5 | V |
| Quiescent current | I_q | $I_O=0$ | - | 4 | 7 | mA |
| ON-state voltage for control | $V_{C(ON)}$ | - | 2.0 | - | - | V |
| ON-state current for control | $I_{C(ON)}$ | - | - | - | 200 | μA |
| OFF-state voltage for control | $V_{C(OFF)}$ | $I_O=0$ | - | - | 0.8 | V |
| OFF-state current for control | $I_{C(OFF)}$ | - | - | - | 2.0 | μA |
| Output OFF-state consumption current | I_{qs} | $V_C=0.4V$ | - | - | 5.0 | μA |

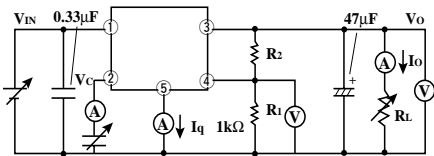
^{*4} PQ20VZ51: $I_O=0.3A$, PQ20VZ11: $I_O=0.5A$

^{*5} PQ20VZ51: $I_O=5mA$ to $0.5A$, PQ20VZ11: $I_O=5mA$ to $1.0A$

^{*6} Input voltage shall be the value when output voltage is 95% in comparison with the initial value.

^{*7} In case of opening control terminal ②, output voltage turns off.

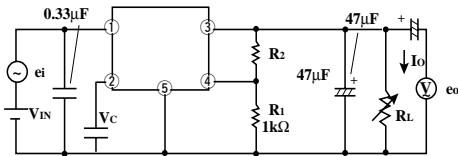
Fig.1 Test Circuit



$$V_O = V_{ref} \times \left(1 + \frac{R_2}{R_1}\right) \approx 1.25 \times \left(1 + \frac{R_2}{R_1}\right)$$

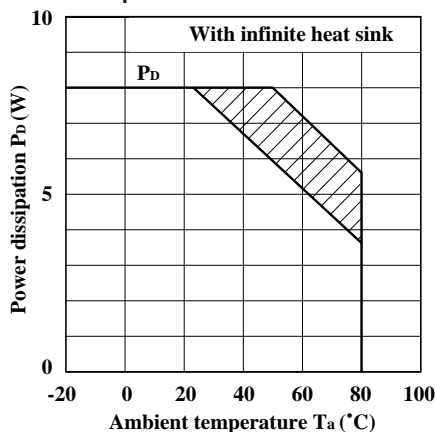
[$R_1=1k\Omega$, $V_{ref} \approx 1.25V$]

Fig.2 Test Circuit of Ripple Rejection



$f=120Hz$ (sine wave)
 $e_i=0.5V_{rms}$
 $I_O=0.3A$
 $RR=20 \log (e_i/e_o)$

Fig.3 Power Dissipation vs. Ambient Temperature



Note) Oblique line portion : Overheat protection may operate in this area.

Fig.5 Output Voltage Adjustment Characteristics

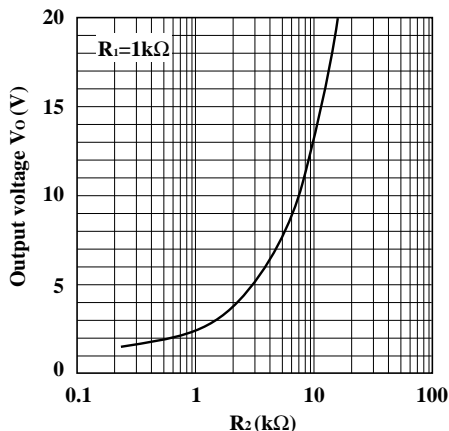


Fig.7 Output Voltage vs. Input Voltage (PQ20VZ51)

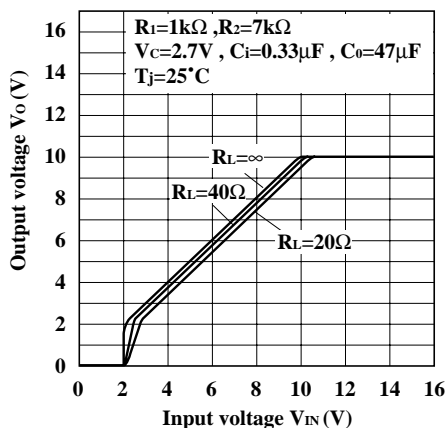


Fig.4 Overcurrent Protection Characteristics (Typical Value)

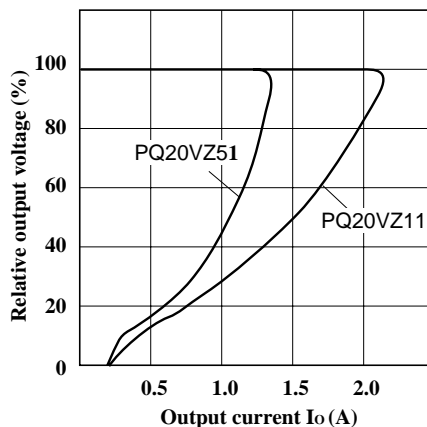


Fig.6 Reference Voltage Deviation vs. Junction Temperature

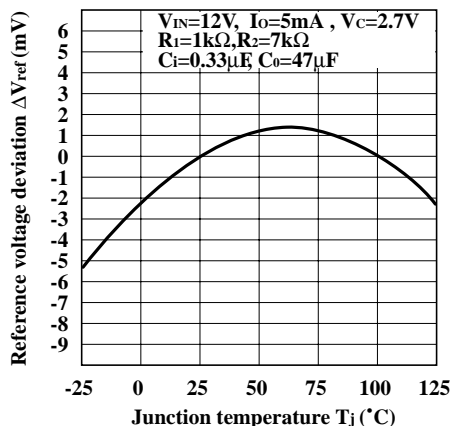


Fig.8 Output Voltage vs. Input Voltage (PQ20VZ11)

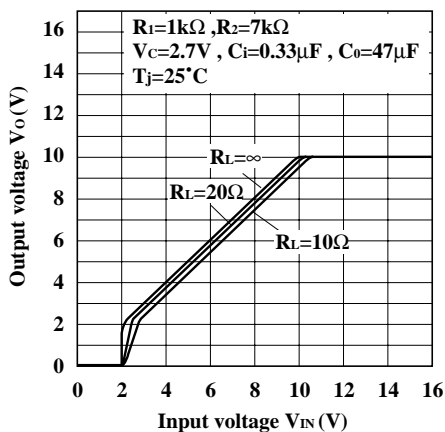


Fig.9 Dropout Voltage vs. Junction Temperature (PQ20VZ51)

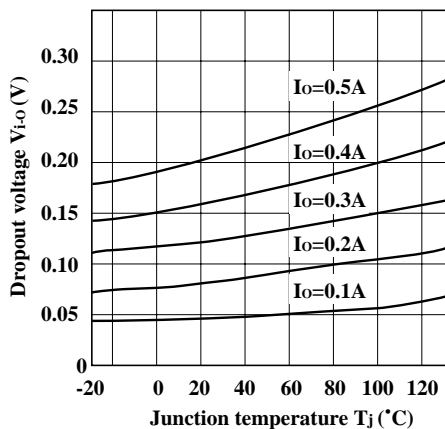


Fig.10 Dropout Voltage vs. Junction Temperature (PQ20VZ11)

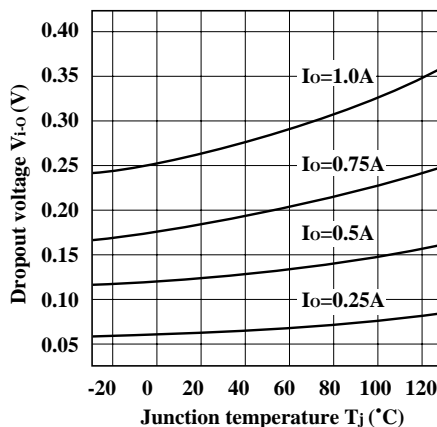


Fig.11 Quiescent Current vs. Junction Temperature

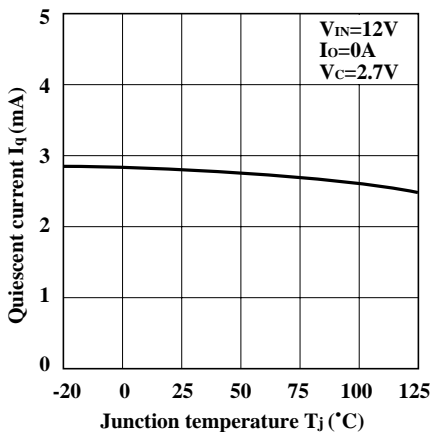


Fig.12 Ripple Rejection vs. Input Ripple Frequency

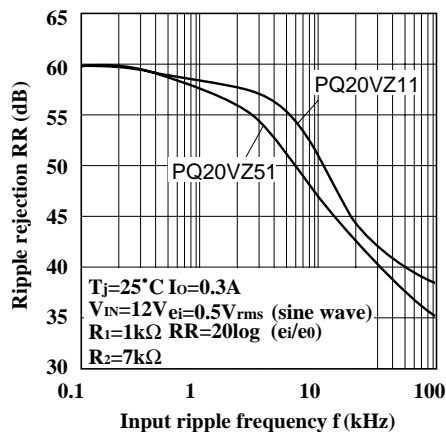


Fig.13 Ripple Rejection vs. Output Current (PQ20VZ51)

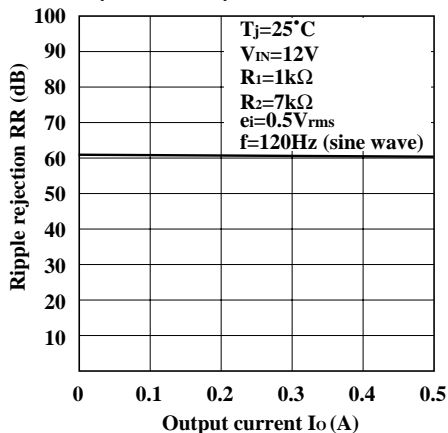


Fig.14 Ripple Rejection vs. Output Current (PQ20VZ11)

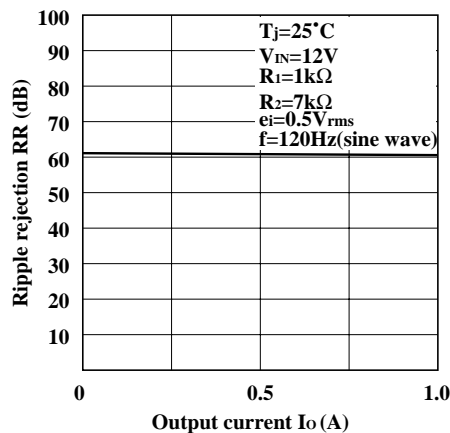


Fig.15 Output Peak Current vs. Dropout Voltage (PQ20VZ51)

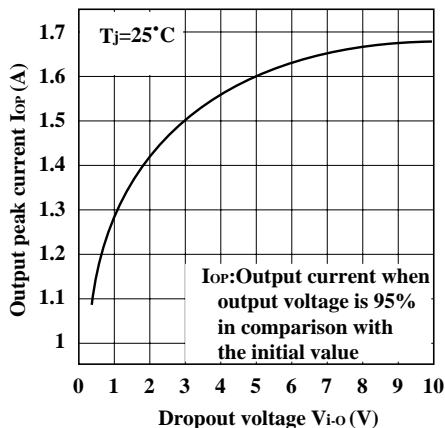


Fig.16 Output Peak Current vs. Dropout Voltage (PQ20VZ11)

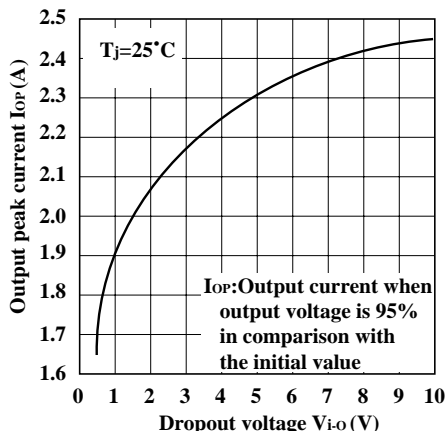


Fig.17 Output Peak Current vs. Junction Temperature (PQ20VZ51)

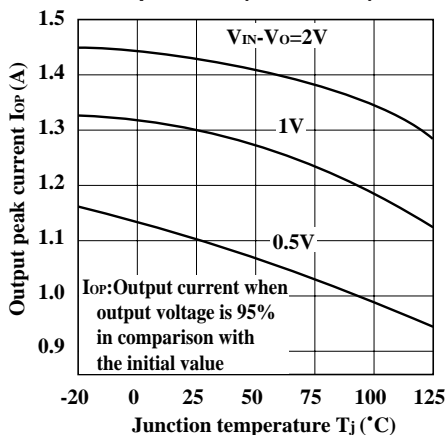


Fig.18 Output Peak Current vs. Junction Temperature (PQ20VZ11)

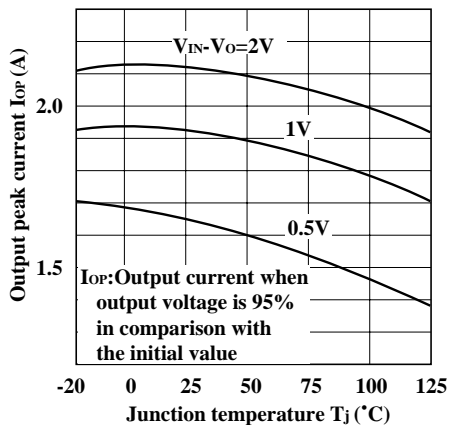
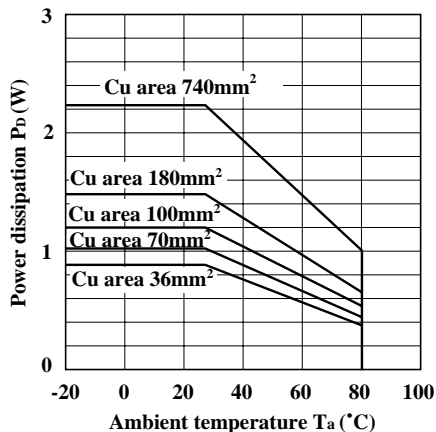
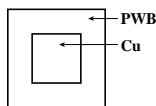


Fig.19 Power Dissipation vs. Ambient Temperature



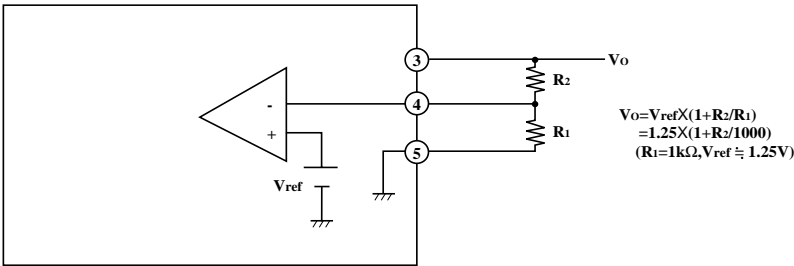
PWB



Material : Glass-cloth epoxy resin
Size : $50 \times 50 \times 1.6\text{mm}^3$
Cu thickness : $35\mu\text{m}$

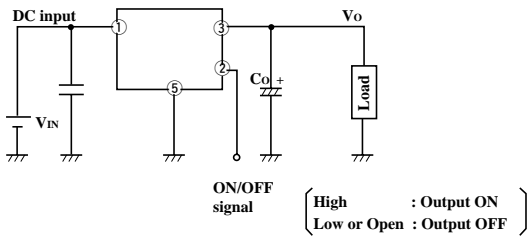
■ Adjustment of Output Voltage

Output voltage is able to be set from 1.5V to 20V when resistors R1,R2 are attached to③,④,∞ terminals. As for the external resistors to set output voltage, refer to the following figure or Fig.5.



■ ON/OFF Operation

As shown in the figure,ON/OFF control function is available.



■ Model Line-ups for Tape-packaged Products

| Output current | Sleeve-packaged products | | Tape-packaged products | |
|----------------|--------------------------|----------------------------|------------------------|----------------------------|
| | Standard type | High-precision output type | Standard type | High-precision output type |
| 0.5A output | - | PQ20VZ51 | - | PQ20VZ5U |
| 1.0A output | - | PQ20VZ11 | - | PQ20VZ1U |